



India Meteorological Department

(Ministry of Earth Sciences)

NATIONAL BULLETIN NO.: 04 (BOB/04/2024)

TIME OF ISSUE: 2120 HOURS IST

DATED: 08.09.2024

FROM: INDIA METEOROLOGICAL DEPARTMENT (FAX NO. 24643965/24699216/24623220)
TO: CONTROL ROOM, NDM, MINISTRY OF HOME AFFAIRS (FAX.NO. 23093750)
CONTROL ROOM NDMA (FAX.NO. 26701729)
CABINET SECRETARIAT (FAX.NO.23012284, 23018638)
PS TO HON'BLE MINISTER FOR S & T AND EARTH SCIENCES (FAX NO.23316745)
SECRETARY, MOES (FAX NO. 24629777)
H.Q. (INTEGRATED DEFENCE STAFF AND CDS) (FAX NO. 23005137/23005147)
DIRECTOR GENERAL, DOORDARSHAN (23385843)
DIRECTOR GENERAL, AIR (23421105, 23421219)
PIB MOES (FAX NO. 23389042)
UNI (FAX NO. 23355841)
D.G. NATIONAL DISASTER RESPONSE FORCE (NDRF) (FAX NO. 26105912, 2436 3260)
DIRECTOR, PUNCTUALITY, INDIAN RAILWAYS (FAX NO. 23388503)
CHIEF SECRETARY, WEST BENGAL (FAX NO. 033-22144328)
CHIEF SECRETARY, ODISHA (FAX NO. 0674-2536660)
CHIEF SECRETARY, ANDHRA PRADESH (FAX NO. 0863-2441029, 08645-246600)
CHIEF SECRETARY, JHARKHAND (FAX NO. 0651-2400255)
CHIEF SECRETARY, CHHATTISGARH (FAX NO. 0771-2221206)
CHIEF SECRETARY, TELANGANA (FAX NO. 040-23453700)
ADMINISTRATOR, ANDAMAN & NICOBAR ISLANDS (FAX NO. 03192- 232656)

Sub: Depression over northwest and adjoining westcentral Bay of Bengal

The depression over westcentral and adjoining northwest Bay of Bengal moved slowly northwestwards with a speed of 7 kmph during past 6 hours and lay centered at 1730 hours IST of today, the 8th September, 2024 over northwest and adjoining westcentral Bay of Bengal near latitude 18.6°N and longitude 86.4°E, about 150 km south-southeast of Puri (Odisha), 180 km east-southeast of Gopalpur (Odisha), 190 km south of Paradip (Odisha), 250 km south of Chandbali (Odisha), 240 km east of Kalingapatnam (Andhra Pradesh) and 350 km south-southwest of Digha (West Bengal).

It is very likely to move nearly northwestwards and intensify further into a deep depression during next 12 hours. Thereafter, continuing to move further northwestwards, it is likely to cross Odisha coast near Puri by noon of 9th September. It would then move west-northwestwards across Odisha & Chhattisgarh during subsequent 2 days.

The system is under the continuous surveillance of Doppler Weather Radars at Vishakhapatnam and Gopalpur

Warnings:

(i) Rainfall warning

Coastal Andhra Pradesh & Yanam: Light to moderate rainfall at most places is very likely with heavy to very heavy rainfall at a few places and extremely heavy rainfall at isolated places on 08th and 9th and heavy rainfall on 10th September.

Odisha: Light to moderate rainfall at most places is very likely with heavy to very heavy rainfall at isolated places over Odisha and isolated extremely heavy rainfall over south Odisha on 08th, heavy

Spatial rainfall distribution: Isolated: <25%, A few: 26-50%, Many: 51-75%, Most: 76-100%

Rainfall amount (mm): Heavy rain: 64.5 – 115.5, Very heavy rain: 115.6 – 204.4, Extremely heavy rain: 204.5 or more.

to very heavy rainfall at a few places with extremely heavy rainfall at isolated places over south Odisha and isolated heavy to very heavy rainfall over north Odisha on 9th; heavy to very heavy rainfall at isolated places over Odisha on 10th and isolated heavy rainfall over interior Odisha on 11th September.

Chhattisgarh: Light to moderate rainfall at most places is likely with heavy to very heavy rainfall at isolated places over south Chhattisgarh on 8th, over north Chhattisgarh on 9th & 10th and heavy rainfall over north Chhattisgarh on 11th September.

Telangana: Light to moderate rainfall at many places is likely with heavy to very heavy rainfall at isolated places very likely on 8th & 9th; heavy rainfall on 10th September.

Gangetic West Bengal: Light to moderate rainfall at most places with heavy to very heavy rainfall at isolated places very likely during 9th & 10th and heavy rainfall at isolated places 12th September.

Jharkhand: Light to moderate rainfall at most places is very likely with heavy rainfall at isolated places on 9th; heavy to very heavy rainfall south Jharkhand during 10th-11th and heavy rainfall on 12th September.

Vidarbha: Light to moderate rainfall at most places is very likely with heavy rainfall at isolated places on 8th & 10th and heavy to very heavy rainfall at isolated places on 9th September.

(ii) Wind warning

Squally weather with wind speed reaching 45-55 kmph gusting to 65 kmph is currently prevailing over Northwest and adjoining Northeast & Central Bay of Bengal and along & off Andhra Pradesh-Odisha-West Bengal and adjoining Bangladesh coasts. It is likely to increase becoming 50-60 kmph gusting to 70 kmph over the same region from midnight of today, the 8th September till morning of 10th September and decrease gradually thereafter.

Squally weather with wind speed reaching 45-55 kmph gusting to 65 kmph is likely to prevail over coastal districts of Odisha and Gangetic West Bengal on 9th and 40-50 kmph gusting to 60 kmph over interior districts of north Odisha and adjoining districts of Jharkhand and north Chhattisgarh on 10th September and decrease gradually thereafter.

(iii) Sea Condition: Rough to very rough sea condition over Northwest and adjoining Northeast & Central Bay of Bengal and along & off Andhra Pradesh-Odisha-West Bengal and adjoining Bangladesh coasts from today, the 8th September till morning of 10th and rough sea condition on 11th September.

(v) Fishermen Warning

Fishermen are advised not to venture into Northwest and adjoining Northeast & Central Bay of Bengal; along & off Andhra Pradesh-Odisha-West Bengal and adjoining Bangladesh coasts till forenoon of 11th September.

(vi) Flash Flood Guidance: (Graphics Attached)

Moderate flash flood risk likely over few watersheds & neighbourhoods of following Met Sub-divisions during next 24 hours.

Coastal Andhra Pradesh - East Godavari and Vishakhapatnam districts.

Chhattisgarh - Bastar, Bijapur, Dantewara, Dhamtari, Gariaband, Janjgir_Champa, Kanker, Mahasamund, Narayanpur and Sukma districts.

Odisha - Anugul, Balangir, Baleshwar, Baragarh, Bauda, Bhadrak, Cuttack, Deogarh, Dhenkanal, Gajapathi, Jharsuguda, Kalahandi, Kandhamal, Khordha, Koraput, Mayurbhanj, Nayagarh, Nuaparha, Puri, Rayagarha, Sambalpur and Subarnapur districts.

Surface runoff/ Inundation may occur at some fully saturated soils & low-lying areas over AoC as shown in map due to expected rainfall occurrence in next 24 hours.

(vii) Impact Expected (coastal Andhra Pradesh, Odisha, Chhattisgarh, Telangana, Jharkhand and West Bengal due to heavy Rainfall and squally wind)

- ✓ Localized Flooding of roads, water logging in low lying areas and closure of underpasses mainly in urban areas of the above region.
- ✓ Occasional reduction in visibility due to heavy rainfall.
- ✓ Reduction of visibility over sea area due to sea spray induced by strong wind and heavy rainfall.

Spatial rainfall distribution: Isolated: <25%, A few: 26-50%, Many: 51-75%, Most: 76-100%

Rainfall amount (mm): Heavy rain: 64.5 – 115.5, Very heavy rain: 115.6 – 204.4, Extremely heavy rain: 204.5 or more.

- ✓ Disruption of traffic in major cities due to water logging in roads leading to increased travel time.
- ✓ Minor damage to kutcha roads.
- ✓ Possibilities of damage to vulnerable structure.
- ✓ Localized Landslides/Mudslides/landslips/mud slips/land sinks/mud sinks.
- ✓ Damage to horticulture and standing crops in some areas due to inundation.
- ✓ It may lead to riverine flooding in some river catchments (for riverine flooding please visit Web page of CWC)
- ✓ Uprooting of small trees and breaking of tree branches e.g. Banana, Papaya, Moringa, Orchards and etc. along coastal districts of North Odisha & adjoining West Bengal.

(viii) Action Suggested (coastal Andhra Pradesh, Odisha, Chhattisgarh, Telangana, Jharkhand and West Bengal due to heavy Rainfall)

- ✓ Fishermen are advised not to venture into Northwest and adjoining Northeast & Central Bay of Bengal; along & off Andhra Pradesh-Odisha-West Bengal and adjoining Bangladesh coasts till forenoon of 11th September.
- ✓ Judicious regulation of offshore/onshore Operations
- ✓ Judicious regulation of surface transports including railways and roadways.
- ✓ Check for traffic congestion on your route before leaving for your destination.
- ✓ Follow any traffic advisories that are issued in this regard.
- ✓ Avoid going to areas that face the water logging problems often.
- ✓ Avoid staying in vulnerable structure.

Agromet advisories for Heavy Rainfall likely over various parts of the country

- ✓ Drain out excess water from rice, soybean, red gram, maize, cotton and turmeric in **Telangana**; from rice, finger millet, maize and groundnut in **Odisha** to prevent water logging.
- ✓ Postpone transplanting of rice in North Coastal **Andhra Pradesh**.
- ✓ Provide mechanical support to horticultural crops & staking to vegetables.
- ✓ Keep the harvested produce at safer place.

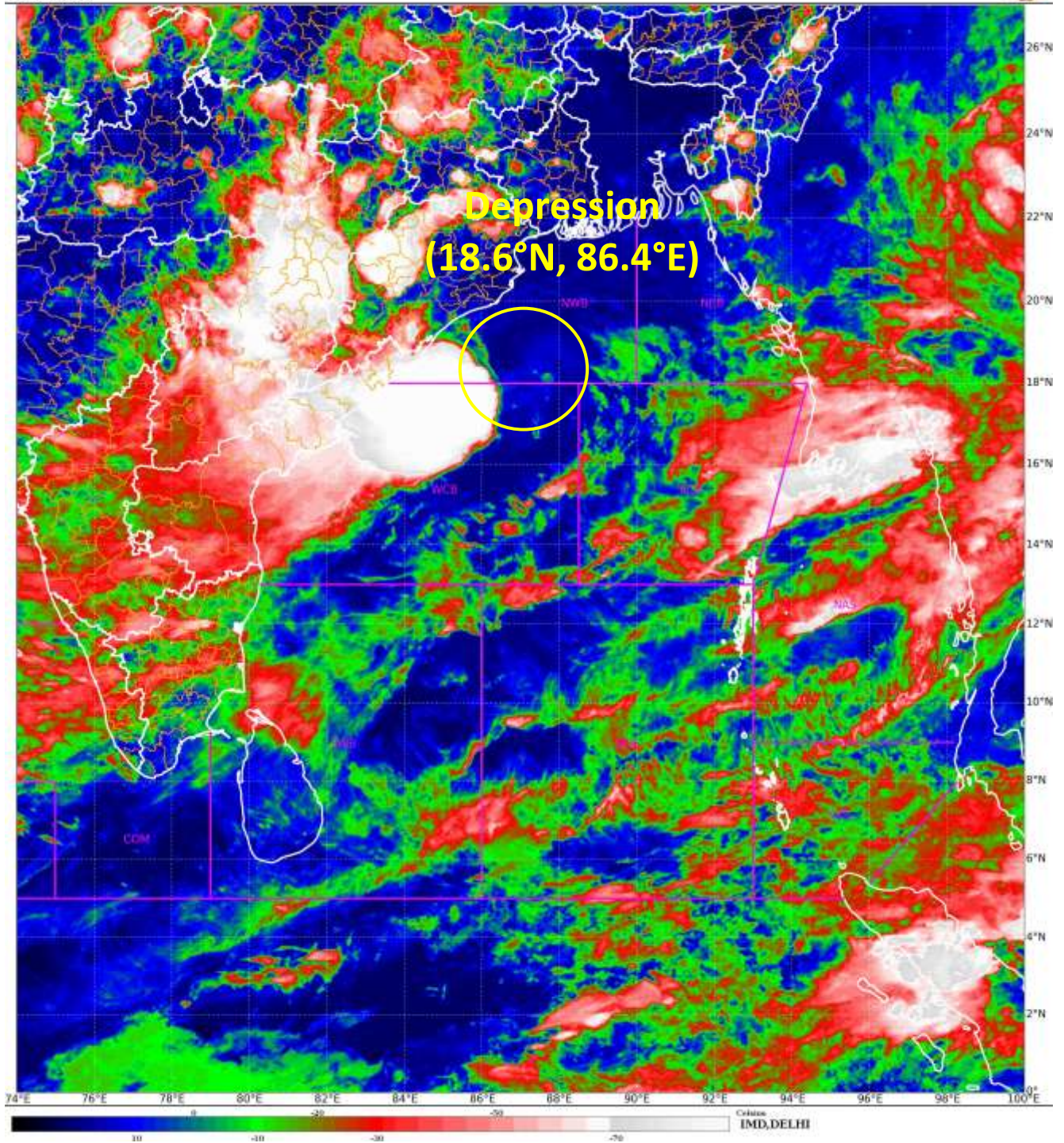
Significant rainfall recorded from 0830 hrs IST to 1730 hrs IST of today, the 8th September, 2024 (in cm) is given in ANNEXURE-I.

The next bulletin will be issued at 0230hrs IST of tomorrow, the 9th September, 2024.

**(Shibin Balakrishnan)
Scientist- D, RSMC, New Delhi**

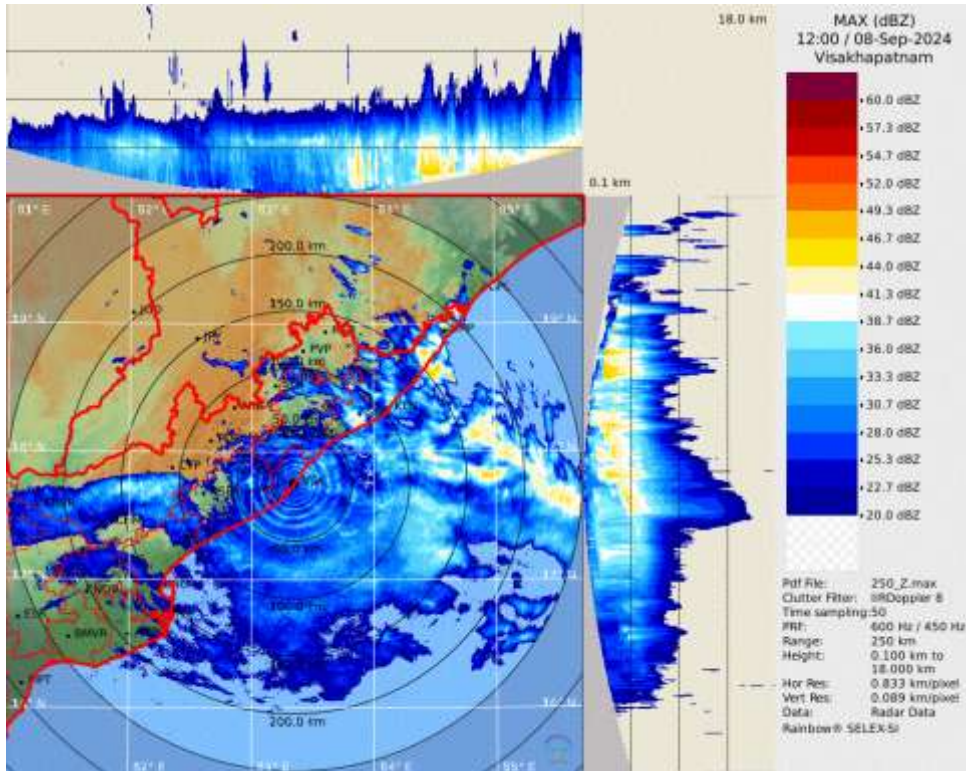
*Copy to: CRS, Pune/ACWC Kolkata/ACWC Chennai/CWC Bhubaneswar/CWC
Visakhapatnam/MO Port Blair/MC Raipur/MC Ranchi/MC Hyderabad/MC Amaravati*

Spatial rainfall distribution: Isolated: <25%, A few: 26-50%, Many: 51-75%, Most: 76-100%
Rainfall amount (mm): Heavy rain: 64.5 – 115.5, Very heavy rain: 115.6 – 204.4, Extremely heavy rain: 204.5 or more.

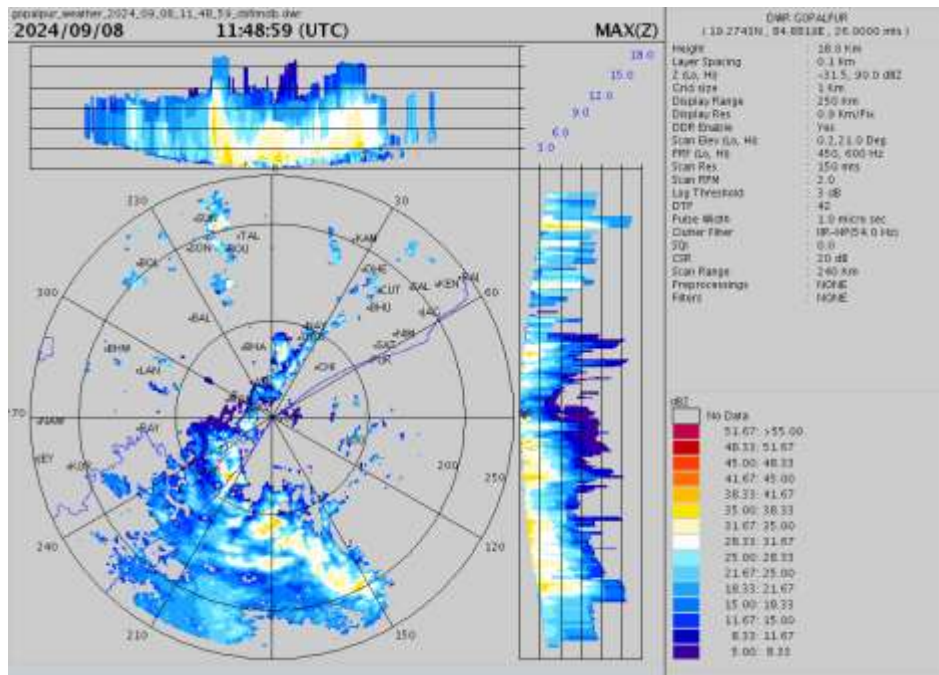


Spatial rainfall distribution: Isolated: <25%, A few: 26-50%, Many: 51-75%, Most: 76-100%
Rainfall amount (mm): Heavy rain: 64.5 – 115.5, Very heavy rain: 115.6 – 204.4, Extremely heavy rain: 204.5 or more.

Reflectivity imagery from **Doppler Weather Radar, Visakhapatnam**



Maximum reflectivity imagery from Doppler Weather Radar, Gopalpur



Spatial rainfall distribution: Isolated: <25%, A few: 26-50%, Many: 51-75%, Most: 76-100%
Rainfall amount (mm): Heavy rain: 64.5 – 115.5, Very heavy rain: 115.6 – 204.4, Extremely heavy rain: 204.5 or more.



OBSERVED AND FORECAST TRACK OF DEPRESSION OVER NORTHWEST AND ADJOINING WESTCENTRAL BAY OF BENGAL BASED ON 1200 UTC (1730 IST) OF 8th SEPTEMBER, 2024.

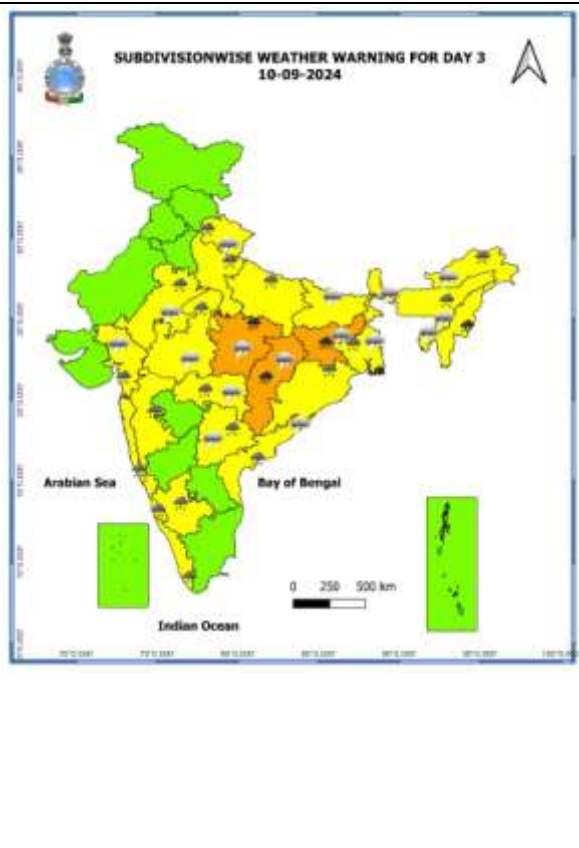
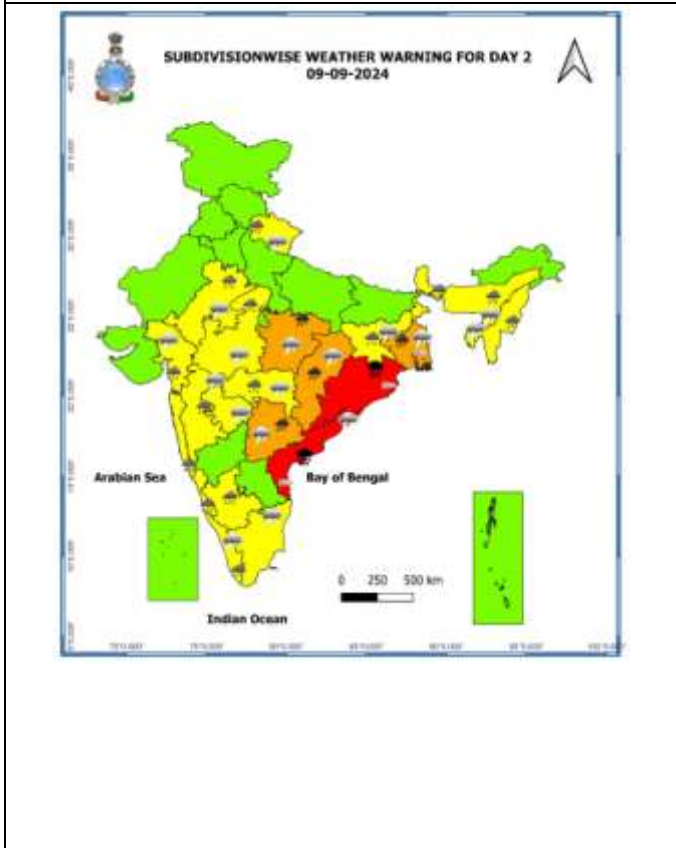
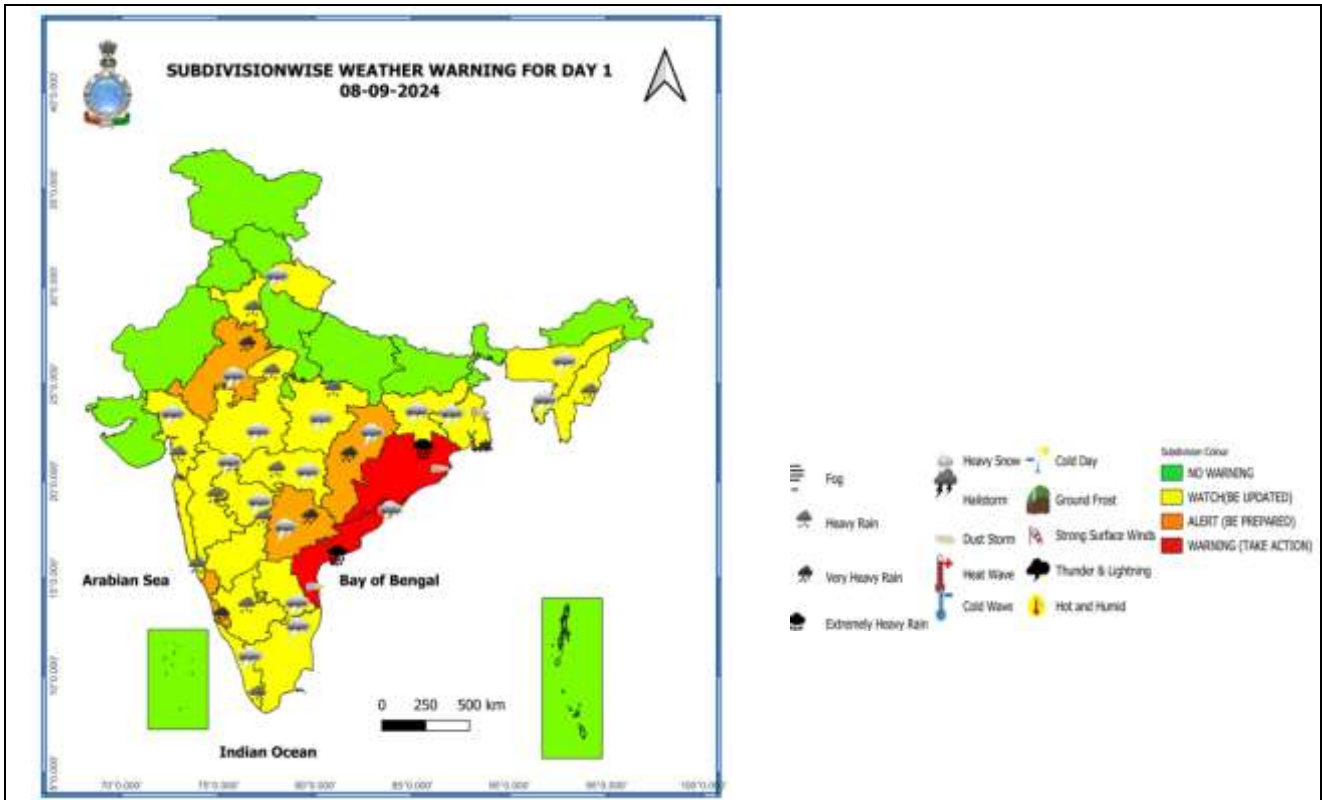


DATE/TIME IN UTC
 IST=UTC + 0530
 L: LOW PRESSURE AREA
 WML: WELL MARKED LOW PRESSURE AREA
 D: DEPRESSION (17-27 KT)
 DD: DEEP DEPRESSION (28-33 KT)
 CS: CYCLONIC STORM (34-47 KT)
 SCS: SEVERE CYCLONIC STORM (48-63KT)
 VSCS: VERY SEVERE CYCLONIC STORM (64-89 KT)
 ESCS: EXTREMELY SEVERE CYCLONIC STORM (90-119 KT)
 SuCS: SUPER CYCLONIC STORM (≥ 120 KT)

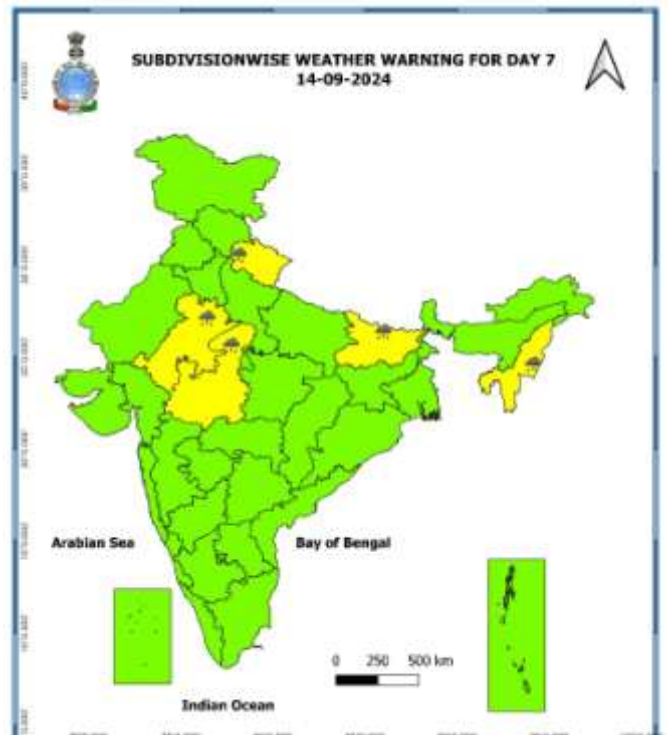
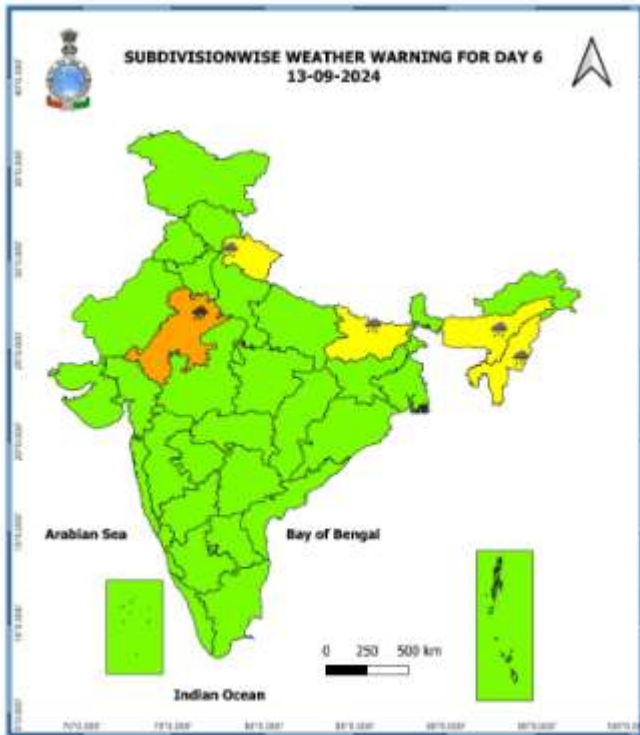
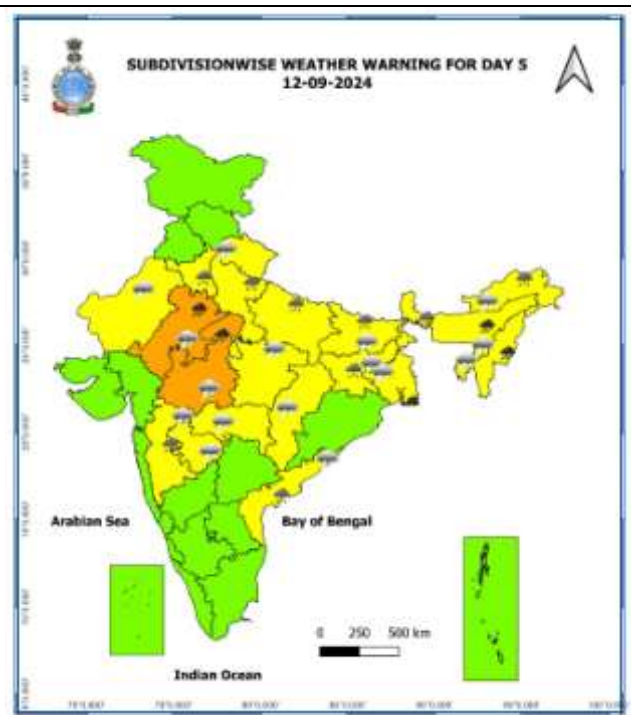
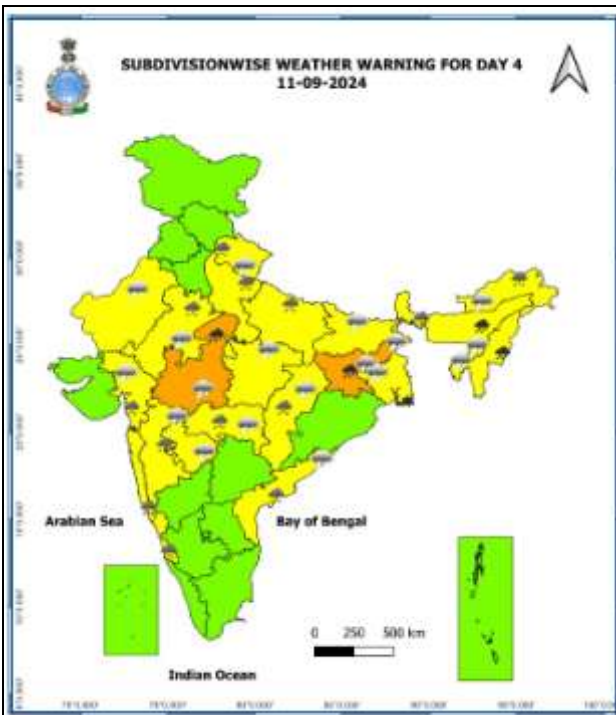
- LESS THAN 34 KT
- 34-47 KT
- ≥ 48 KT
- OBSERVED TRACK
- FORECAST TRACK
- CONE OF UNCERTAINTY

Spatial rainfall distribution: Isolated: <25%, A few: 26-50%, Many: 51-75%, Most: 76-100%
 Rainfall amount (mm): Heavy rain: 64.5 – 115.5, Very heavy rain: 115.6 – 204.4, Extremely heavy rain: 204.5 or more.

Warning Graphics



Spatial rainfall distribution: Isolated: <25%, A few: 26-50%, Many: 51-75%, Most: 76-100%
Rainfall amount (mm): Heavy rain: 64.5 – 115.5, Very heavy rain: 115.6 – 204.4, Extremely heavy rain: 204.5 or more.



- Action may be taken based on **ORANGE AND RED** COLOUR warnings.
- Vulnerable regions likely urban and hilly areas action may be initiated for heavy rainfall warning.
- As the lead period increases forecast accuracy decreases.

Spatial rainfall distribution: Isolated: <25%, A few: 26-50%, Many: 51-75%, Most: 76-100%

Rainfall amount (mm): Heavy rain: 64.5 – 115.5, Very heavy rain: 115.6 – 204.4, Extremely heavy rain: 204.5 or more.

24 hours Outlook for the Flash Flood Risk (FFR) till 1730 IST of 09-09-2024 :

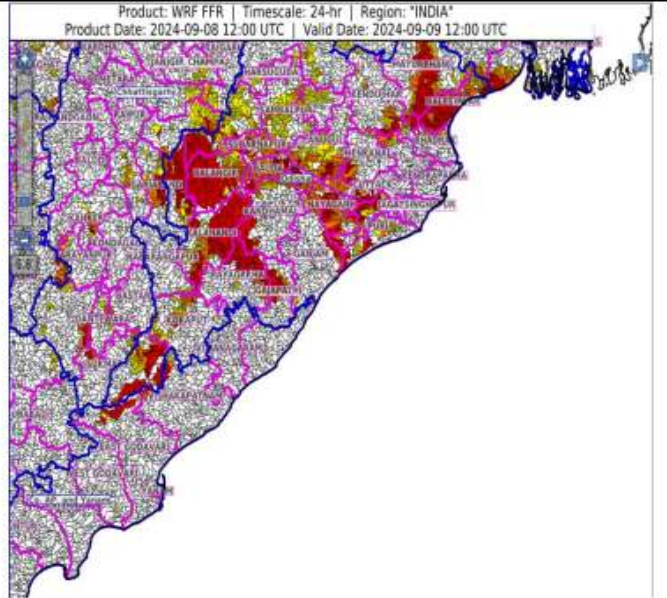
Moderate flash flood risk likely over few watersheds & neighbourhoods of following Met Sub-divisions during next 24 hours.

Coastal AP - East Godavari and Vishakhapatnam districts.

Chhattisgarh - Bastar, Bijapur, Dantewara, Dhamtari, Gariaband, Janjgir Champa, Kanker, Mahasamund, Narayanpur and Sukma districts.

Odisha - Anugul, Balangir, Baleshwar, Baragarh, Bauda, Bhadrak, Cuttack, Deogarh, Dhenkanal, Gajapathi, Jharsuguda, Kalahandi, Kandhamal, Khordha, Koraput, Mayurbhanj, Nayagarh, Nuaparha, Puri, Rayagarha, Sambalpur and Subarnapur districts.

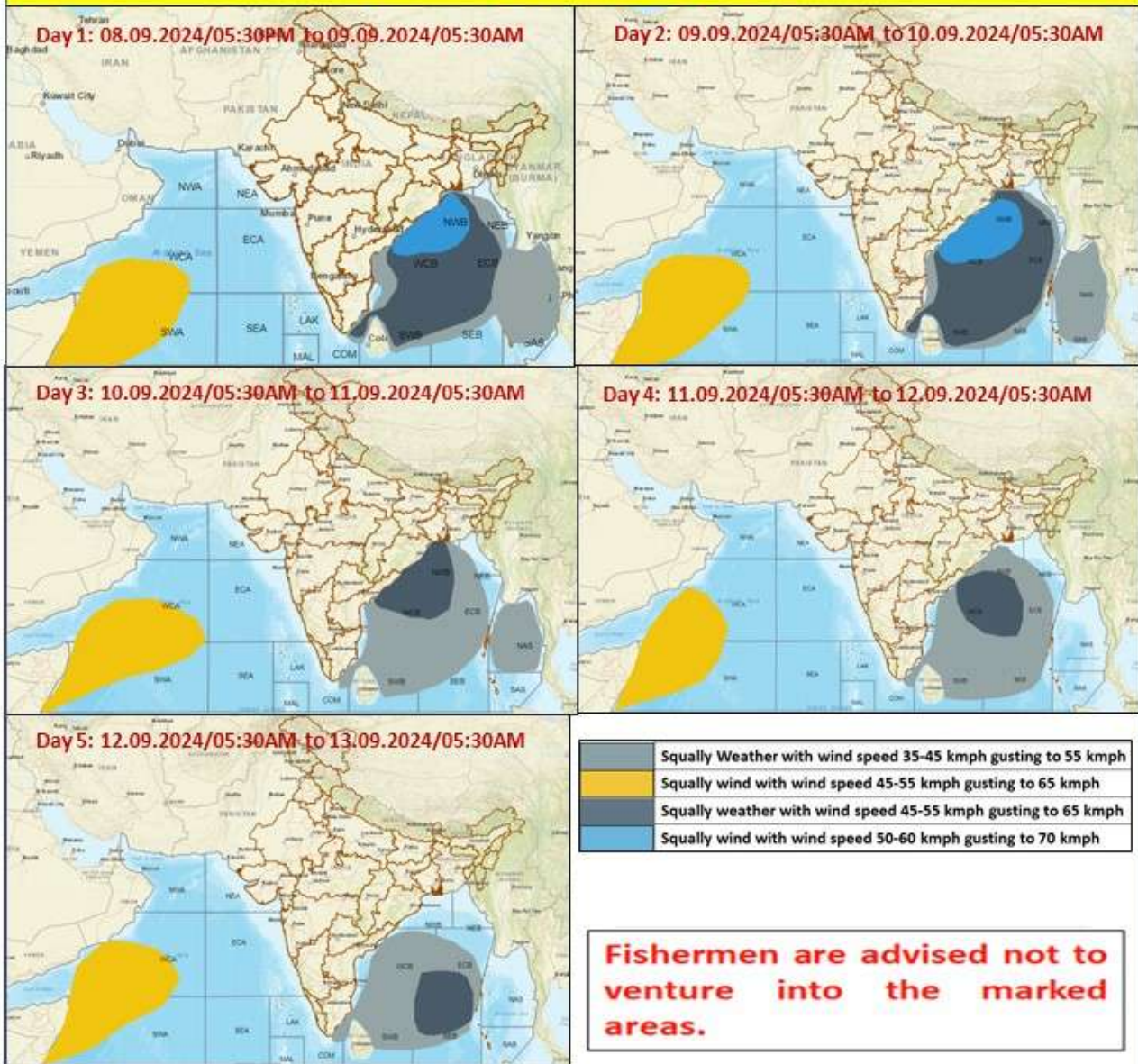
Surface runoff/ Inundation may occur at some fully saturated soils & low-lying areas over AoC as shown in map due to expected rainfall occurrence in next 24 hours.



Spatial rainfall distribution: Isolated: <25%, A few: 26-50%, Many: 51-75%, Most: 76-100%

Rainfall amount (mm): Heavy rain: 64.5 – 115.5, Very heavy rain: 115.6 – 204.4, Extremely heavy rain: 204.5 or more.

Fishermen Warning Graphics



Spatial rainfall distribution: Isolated: <25%, A few: 26-50%, Many: 51-75%, Most: 76-100%
 Rainfall amount (mm): Heavy rain: 64.5 – 115.5, Very heavy rain: 115.6 – 204.4, Extremely heavy rain: 204.5 or more.

Significant rainfall recorded from 0830 hrs IST to 1730 hrs IST of today, the 8th September, 2024 (cm):

Coastal Andhra Pradesh & Yanam: Anandapuram (dis.-Visakhapatnam) 10, Mehadrigadda (dis.-Visakhapatnam) 7, Visakhapatnam, Bhimunipattinam & Kailashgiri (dis.-Visakhapatnam) 6 each, Vizianagaram (dis.-Vizianagaram) 5 each;

Chhattisgarh: Keshkal (dis.-Kondagaon) 4, Mana & Mainpat dis.-Surguja) 3 each, Jagdalpur 2;

Odisha: Gopalpur 4;

Telangana: Yellandu (dis.-Bhadradi_Kothagudem) 3, Rajendarnagar (dis.-Ranga_Reddy) 2;

Spatial rainfall distribution: Isolated: <25%, A few: 26-50%, Many: 51-75%, Most: 76-100%

Rainfall amount (mm): Heavy rain: 64.5 – 115.5, Very heavy rain: 115.6 – 204.4, Extremely heavy rain: 204.5 or more.